

Directions and Tips for: Using Your Laptop at Multiple Campuses

The laptops you received to use as part of the Intel training should already be configured so that only two settings need to be changed to tell it at which campus you are using it. Both of those settings deal with the campus domain name. (Check with your campus technology facilitator if you aren't sure what that is.)

Step 1: Click the START Button on the Taskbar

Step 2: Select SETTINGS

Step 3: Select CONTROL PANEL

Step 4: Double click the NETWORK icon

(See Figure #1)

Step 5: Double click CLIENT FOR MICROSOFT NETWORKS

(See Figure #2)

Step 6: In the WINDOWS NT DOMAIN area type the domain name of the campus (Notice that there are no spaces in the name.)

Step 7: Click OK

(See Figure #3)

Step 8: Select the IDENTIFICATION tab

Step 9: In the WORKGROUP area type the domain name of the campus (Notice that there are no spaces in the name.)

Step 10: Click OK and Restart your computer

Figure #1

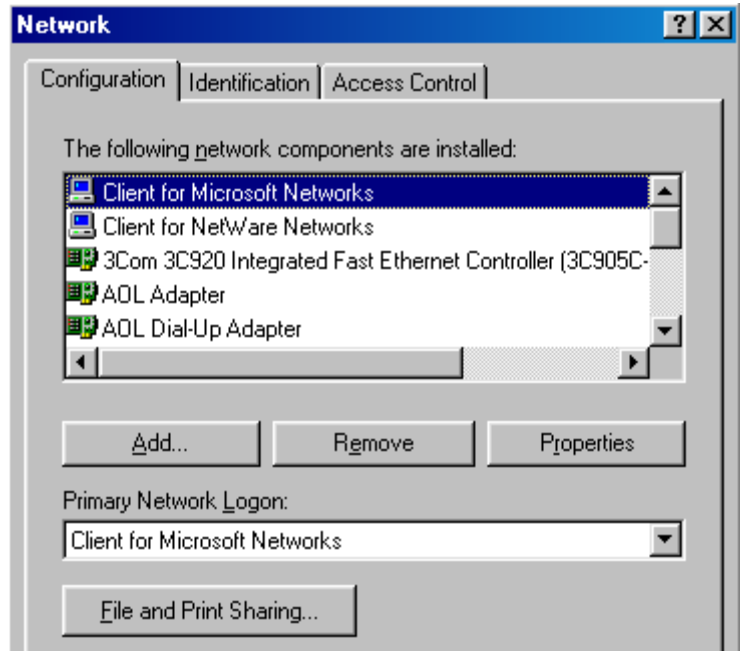


Figure #2

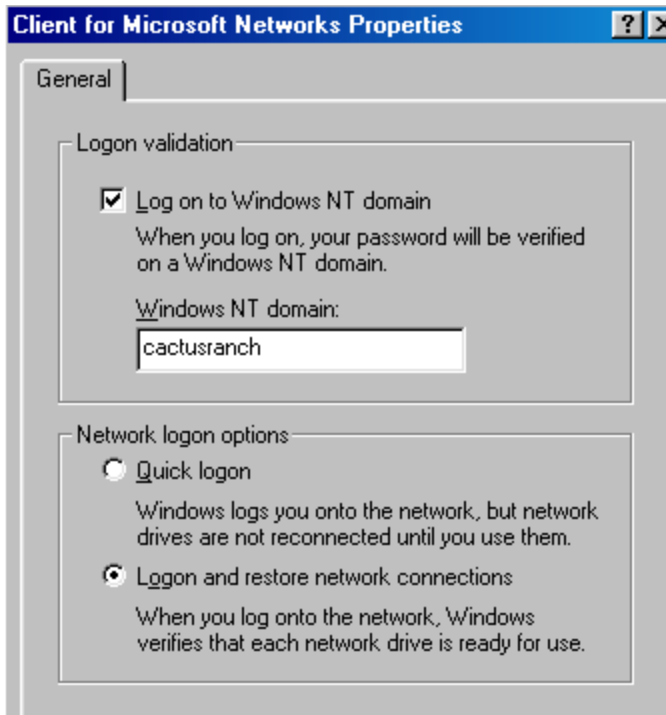


Figure #3

